

**BRISTOL BOARD OF EDUCATION
SPECIAL OPERATIONS COMMITTEE MEETING MINUTES
TUESDAY, April 28, 2021**

The Operations Committee met on Tuesday, April 28, 2021 in the BoE Auditorium and via ZOOM online meeting platform

Present: Committee Chair Eric Carlson, John Sklenka, and Chris Wilson

Also Present: Jill Browne, Timothy Callahan, Dr. Catherine Carbone, Kim Culkin, Conner Dickes (Milone & MacBroom), Dr. Mike Dietter, Jennifer Dube, Carly Fortin, Dr. Sam Galloway, Kristen Giantonio, Rusty Malik (QA&M), Scott Pike (Smartlink), Allison Wadowski, and Mike Zuba (Milone & MacBroom)

1. CALL TO ORDER

The meeting was called to order at 6:01 pm by Chair Carlson
Pledge of Allegiance
The meeting norms were reviewed.

2. APPROVAL OF THE MINUTES

March 24, 2021 REGULAR MEETING

On a motion by Commissioner Wilson and seconded by Commissioner Sklenka, it was unanimously voted to approve the March 24, 2021 regular meeting minutes.

3. PUBLIC COMMENT

There was no public comment at this time.

4. CELL TOWER – NEMS SCHOOL SITE

Scott Pike presented the optimal site at Northeast Middle School where the cell tower would be erected. During his presentation, he discussed their involvement in permitting and zoning, the CSC process, RF Safety, and the construction process. There were questions and discussion about potential benefits and risks with the committee members/

On a motion by Comm. Sklenka and seconded by Chair Carlson, it was unanimously voted to not approve the cell phone tower located at Northeast Middle School.

ROLL CALL VOTE:

Commissioner Sklenka – Yes, Commissioner Wilson – Yes, Chair Carlson - Yes

5. REIMAGINING BRISTOL PUBLIC SCHOOLS UPDATE REGARDING FEASIBILITY PLANNING

Rusty Malik from QA&M presented a brief overview of Option 5 – Phase 1 and Phase 2

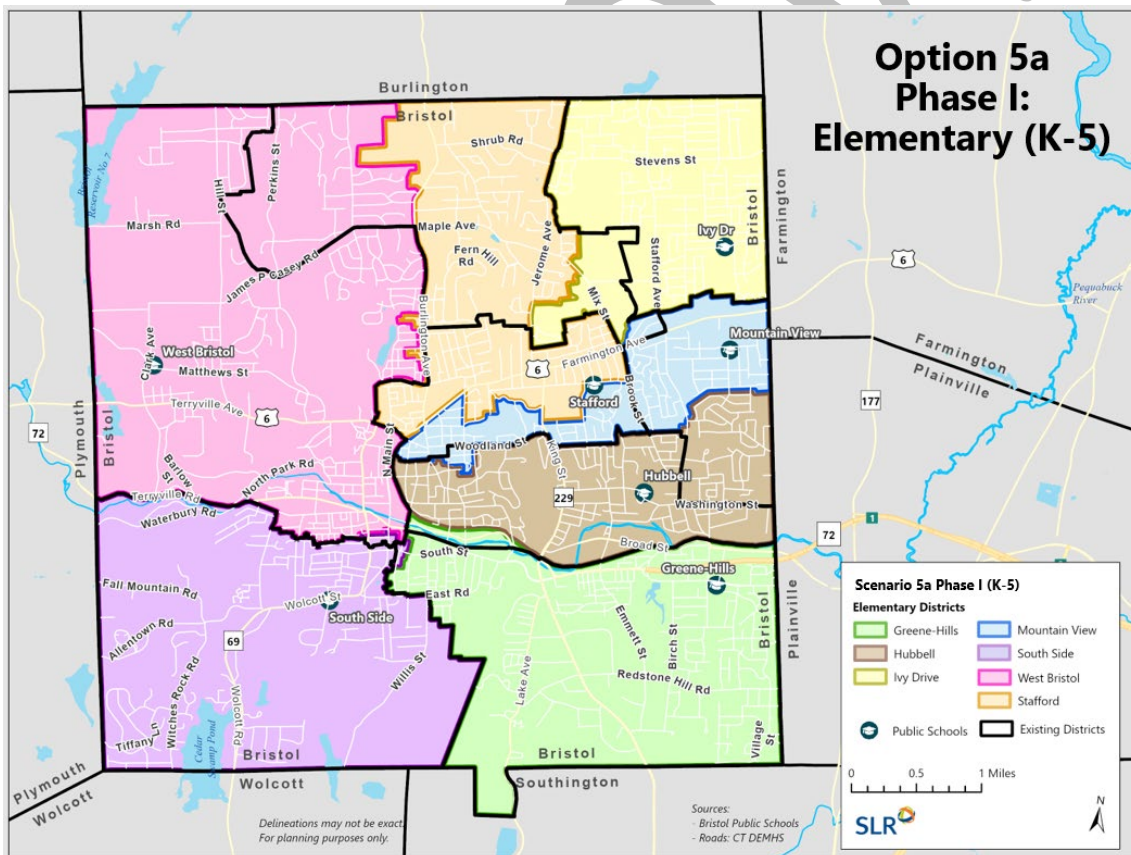
- Build a new NEMS using the existing NEMS as swing space and renovate Edgewood to become the PK center
- Renovate K-8 schools to become K-5 schools
- Phase 1 - New NEMS : approx. 32 – 36 months
- Phase 1A - Renovate Edgewood : approx. 6 – 8 months (concurrent with Phase 1)
- Phase 2A & B Renovations at Greene-Hills and West Bristol : approx. 6 – 8 months
- Phase 2C – Demolish existing NEMS : approx. 2 – 4 months

- Phase 3 - Renovate Stafford for Bristol Prep and Adult Ed : approx. 8 – 12 months
- The estimated project cost is \$112.1M. This estimation does not include escalation. The bonded cost to the city is estimated to be \$39.25M.

Conner Dicks and Mike Zuba from Milone and MacBroom presented the feeder patterns and redistricting while the new NEMS is being built, 5a, and 5b

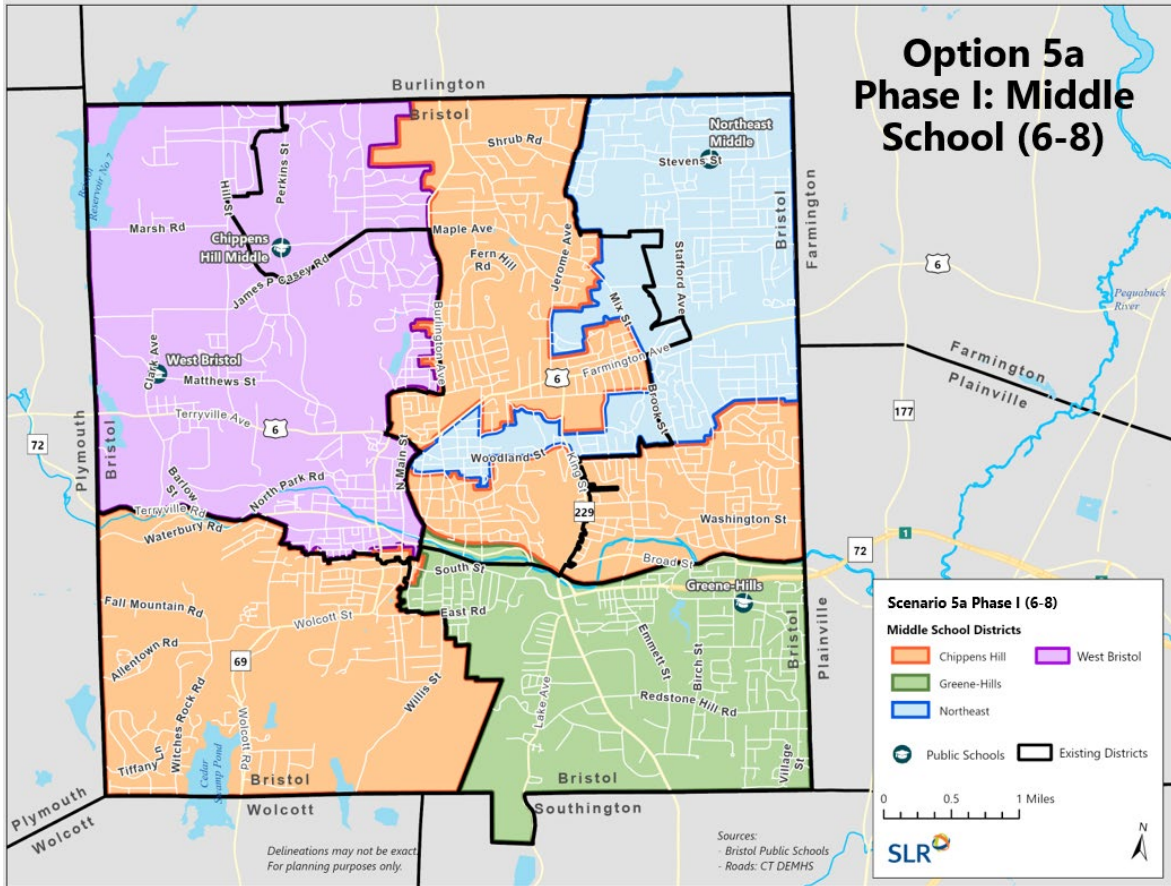
While NEMS is being built –Option 5a Phase 1

- Edgewood becomes PK
- HUB, SSS, and 75% of STA feed CHMS
- IVY, MTV, and 25% of STA feed NEMS
- WB and GH remain K-8
- Edgewood becomes PK
- Proportional assignment to MBIAMS
- IVY and MTV feed NEMS (NEMS feeds BEHS)
- SSS, HUB, STA feed CHMS (CHMS feeds both BCHS and BEHS)
- WB and GH feed BCHS
- Maintains direct feeder patterns from elementary to middle school
- Increases equity and parity



Findings for Redistricting during Option 5a Phase I (Elementary)

- IVY and MTV are intentionally at lower utilization due to existing NEMS size
- Achieves equity balancing objective

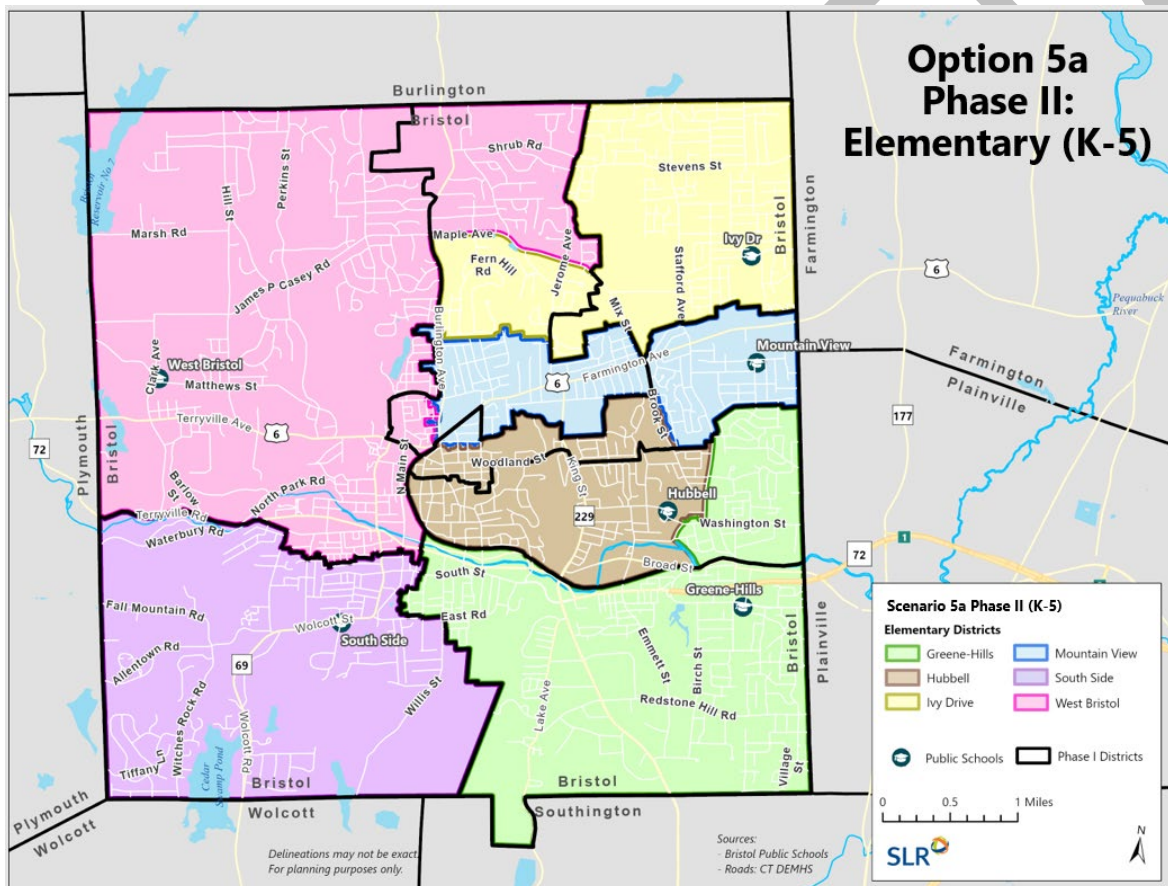


Findings for Redistricting during Option 5a Phase I (Middle School)

- Good socio-economic balance
- WB needing to take on some of EDGE district yields a higher utilization

After NEMS is built –Option 5a Phase II

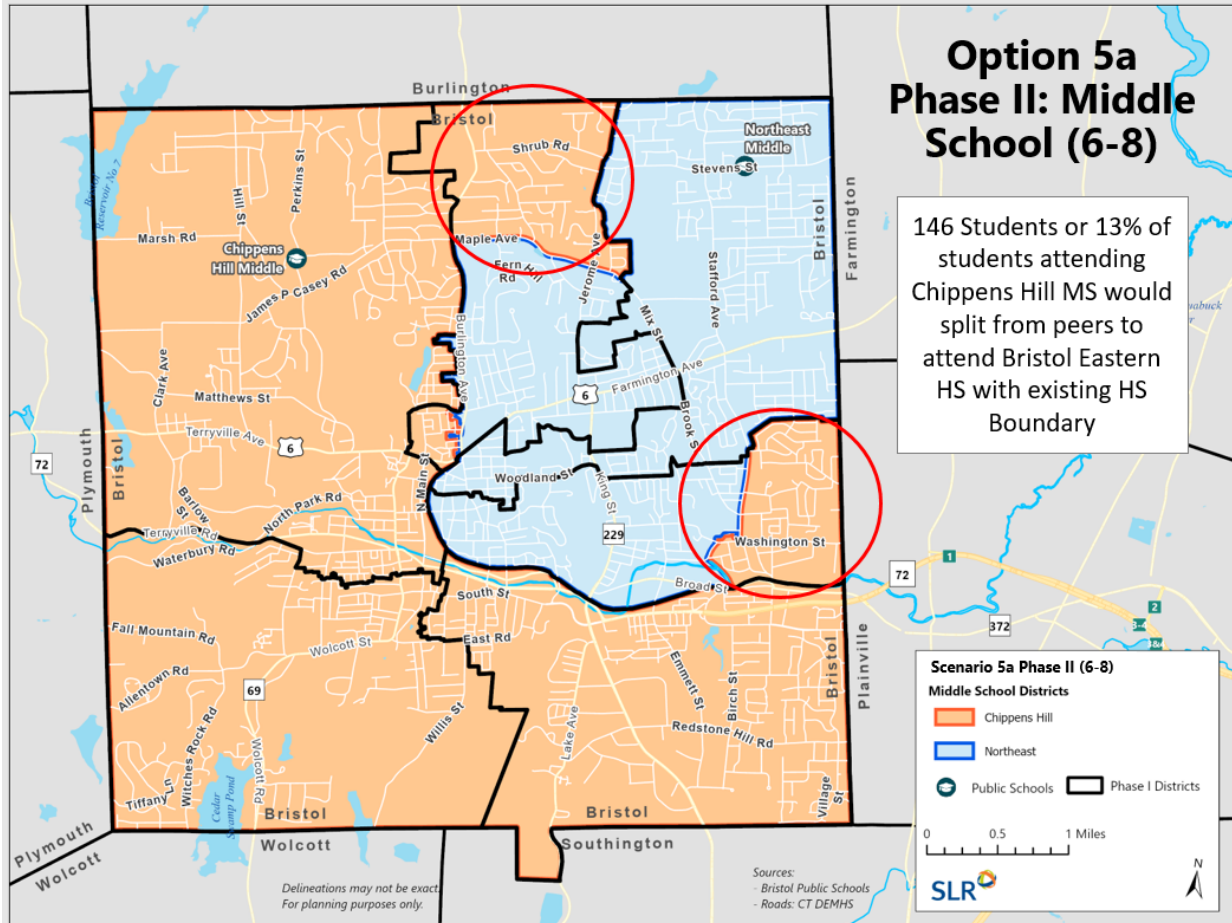
- Edgewood becomes PK
- GH, WB, SSS feed CHMS
- IVY, MTV, and HUB feed NEMS
- Larger, new NEMS opens
- Uniform grade configurations either K-5 or 6-8
- Close Stafford
- Proportional assignment of 6-8 enrollment to MBIAMS
- Maintain direct feeder pattern from elementary to middle schools and high schools
- Increase equity and parity



Findings for redistricting during Option 5a Phase II (Elementary)

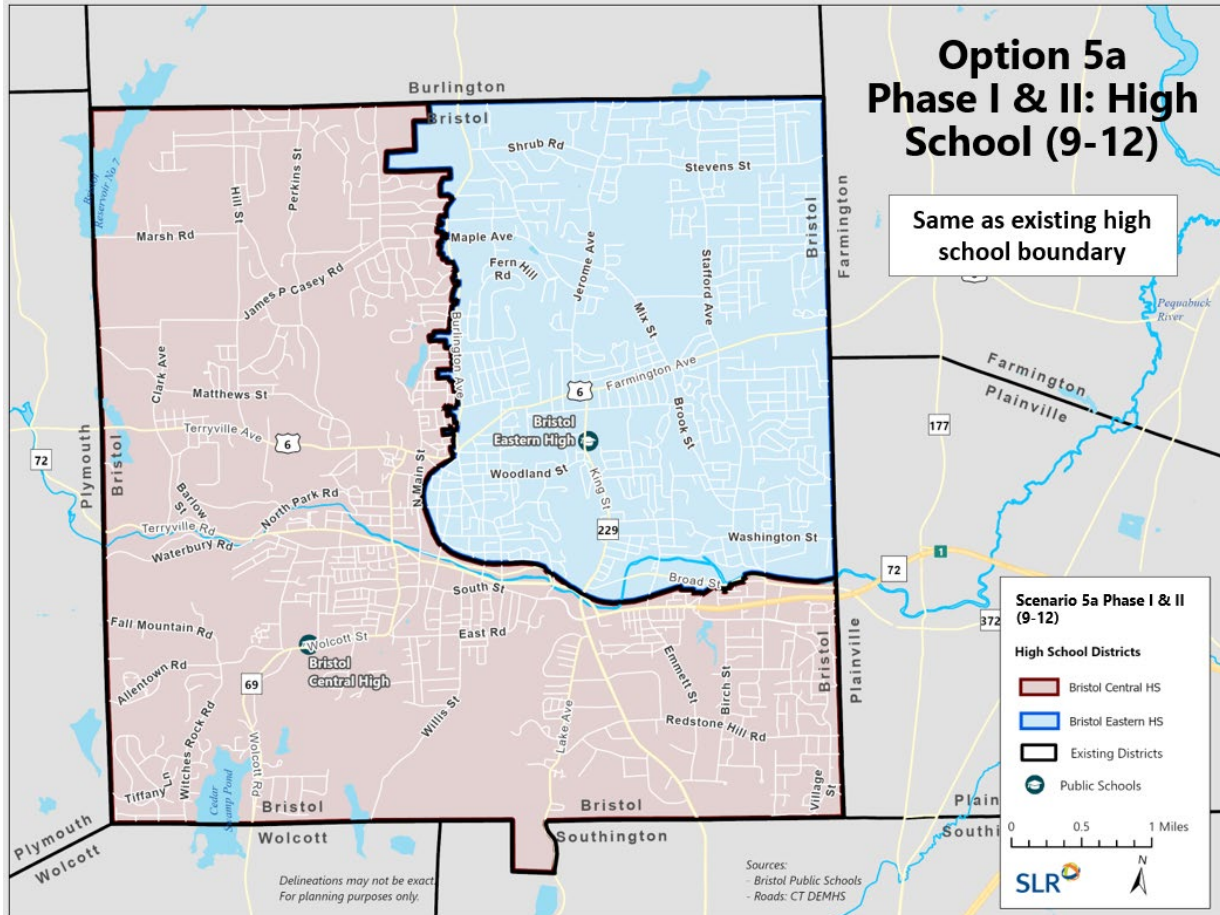
- 10% difference between free and reduced lunch percentages
- Consolidating Stafford results in significant boundary shifts
- Enrollment balance initially shifted to eastern schools in part to maintain reasonable size of CHMS, but also because enrollment is projected to decrease in this area more significantly than the west

The elementary utilization is projected to decrease over the next ten years. Additional capacity at Stafford is not anticipated to be necessary to accommodate incoming enrollment.



Findings for redistricting during option 5a: Phase II (Middle School)

- Size of the new NEMS would need to be carefully planned as enrollment is projected to decrease
- Achieves equity objectives



Redistricting during option 5a: Phase I & II (High School)

Option 5b

This option is the same as 5a except:

- Explored other boundary changes to increase NEMS
 - Shifting more students from CHMS to NEMS
 - Shifting students from SSS to HUB and GH
- Because the west side of Bristol is projected to grow while the east side is projected to decrease, and because the east side is served by smaller elementary schools, it is challenging to shift students towards NEMS while keeping the direct feeder pattern

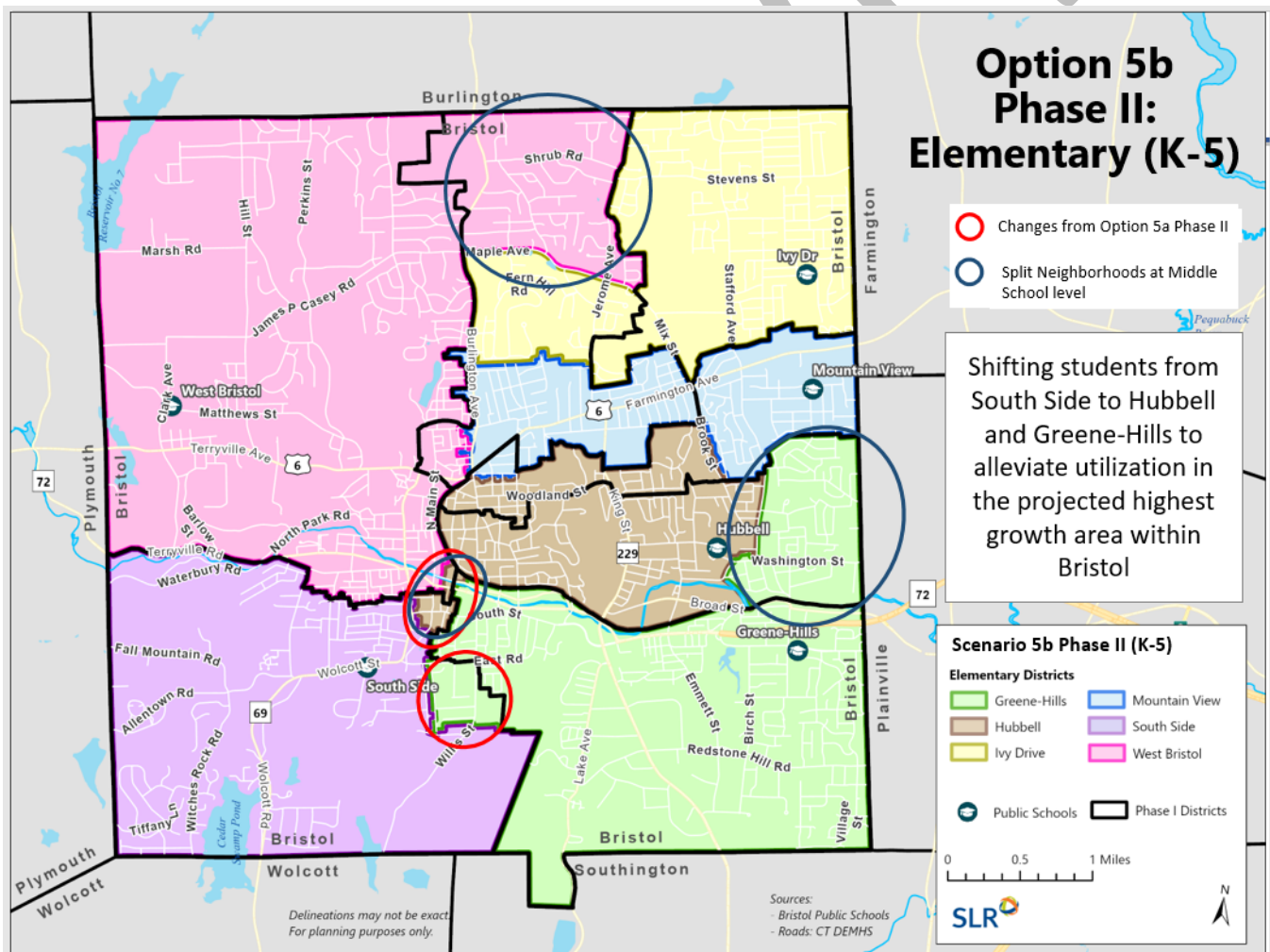
While NEMS is being built - Option 5b: Phase I

- Edgewood becomes PK
- IVY and MTV feed NEMS
- SSS, HUB, and STA feed CHMS
- GH and WB remain a K-8
- CHMS, WB, and GH feed BCHS
- NEMS and CHMS feed BEHS
- Proportional assignment of enrollment to MBIAMS
- Maintain direct feeder pattern from elementary to middle schools
- Increase equity and parity

- Redistricting boundaries are the same as 5a Phase 1 Elementary Level
- IVY and MTV are intentionally at lower utilization due to the current size of NEMS
- Achieves equity balancing objective Middle School Level
- Good socio-economic balance
- West Bristol needing to take on some of the current Edgewood district yields higher utilization

After NEMS is built - Option 5b: Phase II

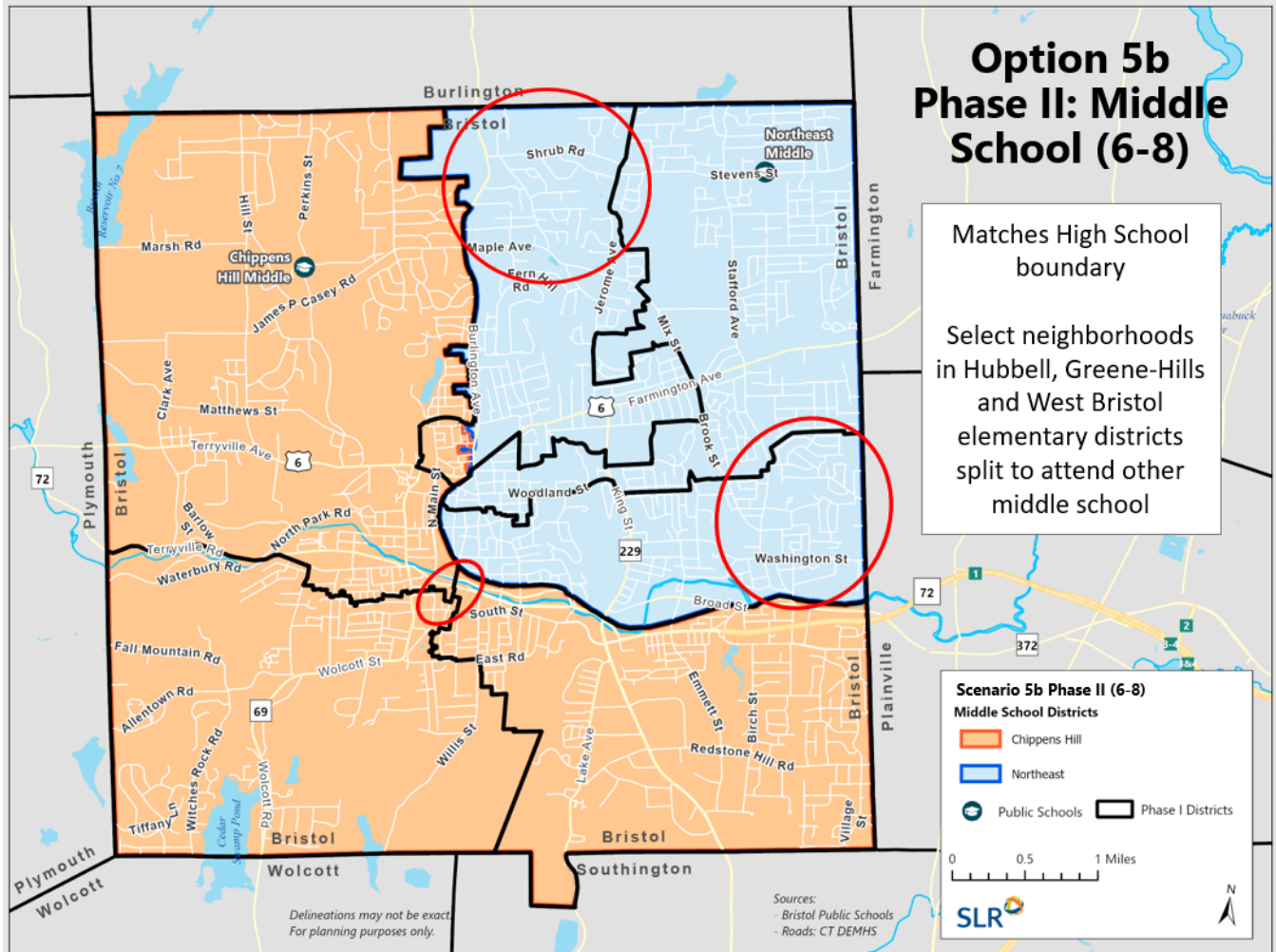
- Larger NEMS opens
- Uniform grade configurations with all schools (K-5 or 6-8)
- Close STA
- Select neighborhoods in HUB, GH, and WB do not feed into schools' primary middle school
- Proportional assignment of 6-8 enrollments to MBIAMS
- Increase equity and parity



Findings for Redistricting during Option 5b Phase II (Elementary)

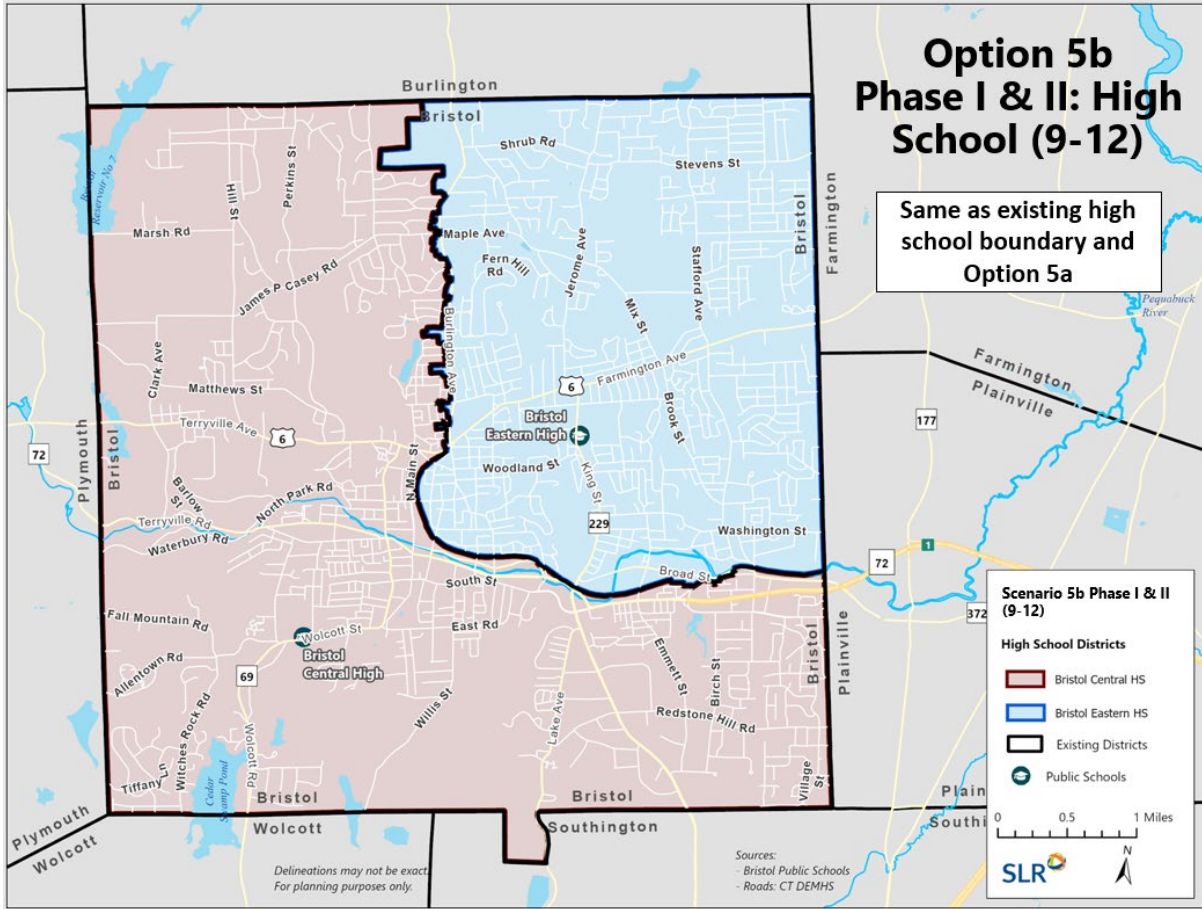
- Projected decline of about 160 K-5 students by 2025-26 districtwide, leading overall utilization to decrease from 101% to 96%

- IVY and MTV would no longer be facing capacity restrictions due to NEMS, increasing utilization to just over 100%
- Additional capacity created at SSS to reflect growing student projections
- 10% difference between free and reduced lunch percentages



Findings for Redistricting during Option 5b Phase II (Middle School)

- Select neighborhoods in EPH, GH, and WB elementary districts split to attend other middle schools
- Projected decline of about 100 6-8 students by 2025-26
- Middle School facilities consolidated to CHMS, the new NEMS, and MBIAMS taking GH and WB 6-8 sections offline
- Achieves equity balancing objective
- Does not maintain direct feeder pattern from elementary to middle school



Findings for Redistricting during Option 5b Phase II (High School)

- Same existing high school boundary as Option 5a

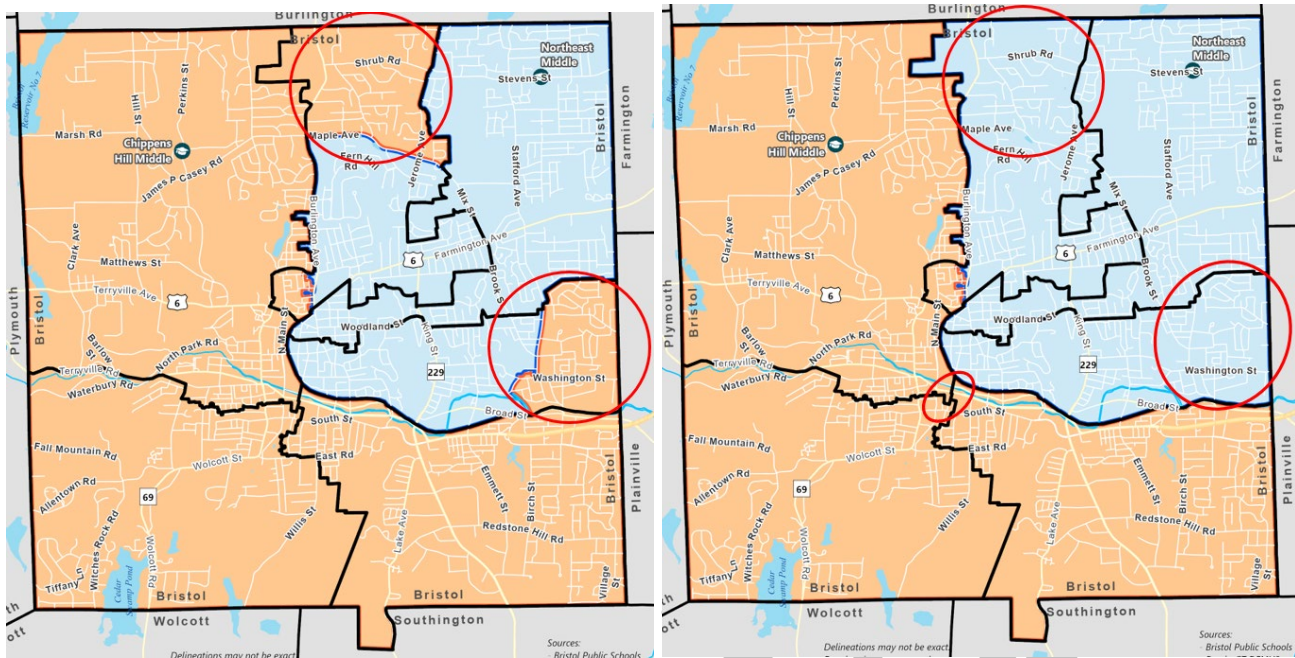
5a/5b Phase II Comparison

Option 5a: 6-8 Enrollment (2019-20) Phase II

School	Option 5a Projected Enrollment (2025-26)	% of Target Capacity (2025-26)	Target Capacity	Option 5a Enrollment (2019-20)	Free/Reduced Lunch Count (2019-20)	Free/Reduced Lunch % (2019-20)	Minority Student Count (2019-20)	Minority Student % (2019-20)
Chippens Hill	913	106%	864	920	590	54%	522	48%
Northeast	553	77%	720	648	447	58%	378	49%
Memorial	288	100%	288	288				
TOTAL	1,754	94%	1,872	1,856	1,037	56%	900	48%

Option 5b: 6-8 Enrollment (2019-20) Phase II

School	Option 5b Projected Enrollment (2025-26)	% of Target Capacity (2025-26)	Target Capacity	Option 5b Enrollment (2019-20)	Free/Reduced Lunch Count (2019-20)	Free/Reduced Lunch % (2019-20)	Minority Student Count (2019-20)	Minority Student % (2019-20)
Chippens Hill	802	93%	864	798	540	57%	468	50%
Northeast	664	92%	720	770	497	54%	432	47%
Memorial	288	100%	288	288				
TOTAL	1,754	94%	1,872	1,856	1,037	56%	900	48%



Discussion with the commissioners led to a BoE workshop for May 10, 2021. These two options as well as a third option 5c will be presented to the entire board.

6. OLD BUSINESS

Comm. Wilson reiterated that Adult Ed needs to be near a bus line and moving Adult Ed to Stafford does not meet that criteria.

7. NEW BUSINESS

Comm. Sklenka would like consideration of having OPS meet on a different day so other commissioners can be at these meetings. Commissioners have to leave the meeting at 7:00 to attend other meetings and can't be at this meeting in its entirety.

At the OPS meetings, a BoE workshop for the entire board can be requested – Findings from the workshops will go back to OPS then to the full board meetings for action.

8. ADJOURNMENT

On a motion by Comm. Wilson and seconded by Comm. Sklenka, the meeting was adjourned at 7:36 p.m.

Respectfully Submitted,

Tara Landon